

Item No.: 31013002

Solar Ground Mounting Structure
-Single pole

Wind load: 30m/s~55m/s

➤ **Design criterion**

Basic Wind Pressure: 0.5-0.8 KN/m²

Panel size: 1650x992 mm 3x8 landscape

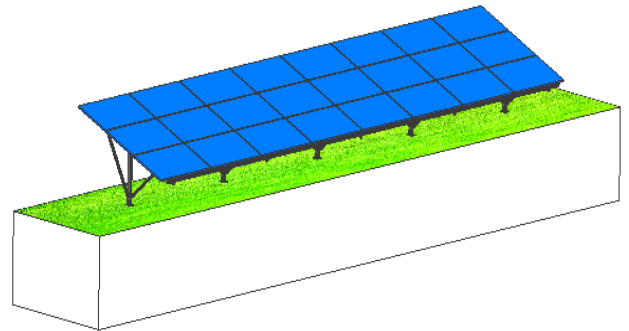
Covered area : 3.2X10 M²

➤ **Product Introduction**

Product Material: Q235 Hot-galvanized steel with thickness>70um

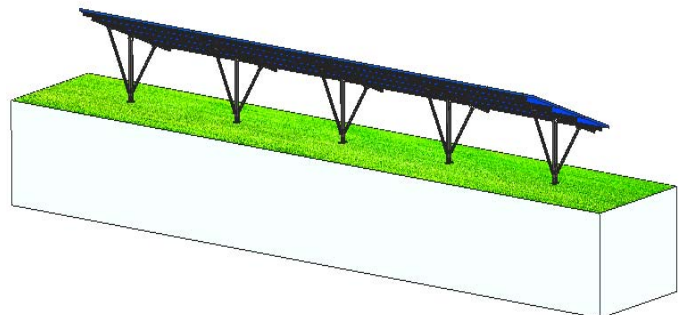
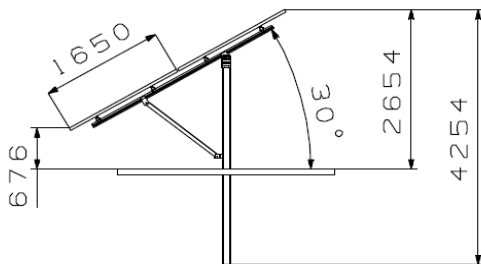
Fasten Material: Stainless steel (304), aluminum clamps

The distance from lowest point of panel to ground:
300↔500 mm



➤ **Product Characteristic**

- Single pole-hammered pile
- High strength
- ✧ Apply to ground mounting
- ✧ Adopt stamping pile
- ✧ With distance from ground to the lowest point of panel



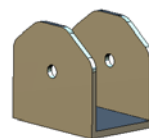
➤ **Components**



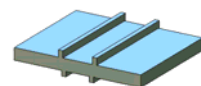
triangle connector



pole connector-down



pole connector-up



panel clamp

Room 1005, No. 939 JinQiao Road, Pudong, Shanghai China 200136

Tel: 61600231, 61600232, 61600233

Email: christina.rao@frontierack.com

www.frontierack.com